

REGISTRATION BROCHURE

EARLY BIRD
SPECIAL
SAVE \$200
REGISTER
BY 3.15.24

PEOPLE *Passion* PURPOSE

Transforming the
Aging Life Care™ Profession

40th
ANNIVERSARY
Celebration

AGING (i)fe CARE®
A S S O C I A T I O N

April 17-20, 2024 | Royal Sonesta Downtown | Minneapolis, MN

SPECIAL PRE-CONFERENCE SESSIONS Wednesday, April 17, 2024

OPENING RECEPTION Wednesday, April 17, 2024

CONFERENCE DATES Thursday, April 18, 2024 – Saturday, April 20, 2024

Visit aginglifecare.org to register today!

T H A N K Y O U T O O U R M A J O R S P O N S O R S

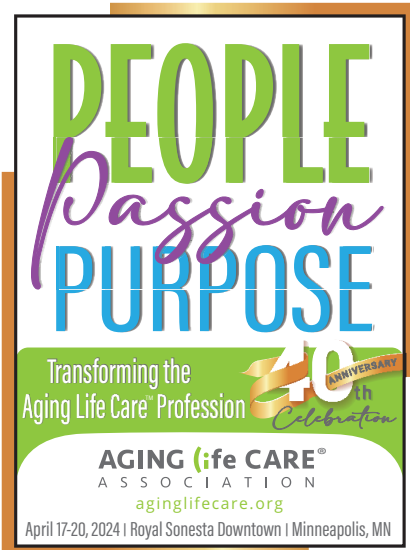
RUBY SPONSOR

EMERALD SPONSOR

SAPPHIRE SPONSORS

JADE SPONSOR





Welcome!

On behalf of the Aging Life Care Association's Board of Directors, Staff, and Program Committee, we invite you to attend the 40th Annual Conference in beautiful Minneapolis, MN! Re-ignite your passion and purpose as we aim to transform the Aging Life Care Profession. Be transformed by the dynamic speakers, educational breakout sessions, exhibit hall resources, networking, and, of course, FUN. If we can do anything to make your experience as transformational as possible, please let us know.

CONFERENCE SCHOLARSHIPS AVAILABLE

If you are a member who is unable to attend the conference due to financial reasons, you may qualify for a scholarship of up to \$500. You must be a member in good standing at the Student, Associate, Professional, or Advanced Professional level for a minimum of one year. Applications should be submitted to Julie Wagner no later than March 15, 2024 at jwagner@aginglifecare.org

2024 ALCA Conference PLANNING COMMITTEE

CO-CHAIR Trish Colucci Barbosa, RN-BC, CCM | *Flanders, NJ*

CO-CHAIR Debra Feldman, MSW, LCSW, CMC | *Buffalo Grove, IL*

Ann Sutton Burke, MPA, BA, CMC
Cincinnati, OH

Kathleen Dempsey, RN, BC
Minneapolis, MN

Kimberly D. Ealey | *Los Angeles, CA*

Kimberly E. Hamilton, BA, MSSW, LCSW, C-ASWCM | *Suffern, NY*

Melissa Johnson, LISW | *Minneapolis, MN*

Lindsay C. Kratzer, MS, CDP, CMC
Baldwinsville, NY

Malika I. Moore, LICSW, LCSW-C
Washington, DC

Susan J. Vail, MSW, LMSW | *Latham, NY*

Susan Wack, MSW, LCSW, CASWCM
Oconomowoc, WI

2024 ALCA BOARD OF DIRECTORS

PRESIDENT Kate Granigan, MSW, LICSW, CASWCM | *Newton, MA*

PRESIDENT-ELECT Steven Michael Barlam, MSW, LCSW, CMC | *Los Angeles, CA*

PAST PRESIDENT Anne Sansevero, RN, AGNP, MA, CCM | *New York, NY*

SECRETARY-TREASURER Nina Pflumm Herndon, MA, CMC, RCFE, CLPF | *Millbrae, CA*

DIRECTORS

Lisa Kaufman, MS, CMC, CTRS | *Roswell, GA*

Barbara Levison, MA, MSW, CMC | *Sarasota, FL*

Annette Murphy, BA, MSW, C-ASWCM
Monroe, NJ

Susy Murphy, BA, CMC | *Silver Spring, MD*

Lina Supnet-Zapata, MBA, TxCG, CMC | *Austin, TX*

Jennifer Szakaly, MA, CMC | *Cornelius, NC*

Elyse Weber-Sacks, MSW, LSW, CMC
Westfield, NJ



HOTEL INFORMATION

The Royal Sonesta Minneapolis Downtown

35 South 7th St., Minneapolis, MN 55402 | (612) 339-4900

LONG LIVE THE GUEST AT THE ROYAL SONESTA.

Find elegance and unrivaled comfort with Sonesta conveniently located in downtown Minneapolis - close proximity to major points of interest in the city, from the Orchestra Hall, the Walker Art Center, and more. Boasting modern guest rooms and suites, sophisticated meeting space, and lavish on-site dining, the Royal Sonesta Minneapolis Downtown will provide a calming retreat for ALCA conference attendees.

GROUP ROOM RATES: \$145 Single/Double Rate
For reservations, visit the ALCA Reservations Booking Link on our website or call the hotel directly and reference the Group Discount Code: G041524ALCA. Group rates are available on a first-come, first served basis and cannot be guaranteed after March 15, 2024.

AIRPORT TRANSPORTATION

The Royal Sonesta Minneapolis Downtown is approximately 12.5 miles/15-20-minute drive from the Minneapolis-St Paul International Airport (MSP). Multiple options for transportation are available. Fares range from \$20-50 each way depending on service/time of day. For more information visit the Maps & Transportation page on the Minneapolis website at minneapolis.org.

MINNEAPOLIS

If you've never been to the "City of Lakes", we promise, you'll be pleasantly surprised! Get ready to walk, dance, shop, run, cheer and of course, eat! Music, arts & culture, history, lakes, breathtaking murals, world-class museums, inspiring art fairs, incredible Broadway shows, and one giant spoon! Not to mention the largest shopping and entertainment complex in the US. Minneapolis has it all...except sales tax on clothing - so pack light! The innovative Minneapolis food and drink scene is ready to impress - whatever your tastes. To plan your visit and explorations, visit minneapolis.org.

THE PAISLEY EXPERIENCE TOUR

FRIDAY, APRIL 19, 2024

3:00 - 6:00 PM

\$125 Per Person

Separate Registration/Fee Required

See Page 12 for details.



PRE-CONFERENCE INTENSIVES - WEDNESDAY, APRIL 17, 2024

8:00 AM – 12:00 PM

Aging Life Care™ Essentials: Section One – Clinical & Ethical

Pre-Conference Intensive

Separate Fee & Registration Required

Aging Life Care™ is a complex process that integrates areas as diverse as human development, health, mental health, family dynamics, community resources, law, finance, culture, and spirituality. It's also about the way the professional utilizes themselves in multidimensional roles to facilitate cohesion across settings, services, organizations, entitlements, family members, and community. It is therefore imperative that the Aging Life Care Professionals have a suite of knowledge, skills, competencies, and resources to deliver high-quality services to clients, employers, and constituents. These talents also need to be grounded in a code of ethics and standards of practice that represent principles of conduct when confronted with ethical and/or business dilemmas. This session will explore ALCA's Code of Ethics and Standards of Practice, while discussing the clinical issues that frequently arise in Aging Life Care practices. During this interactive session we will use actual case histories to explore clinical approaches to meeting client needs and resolving common ethical challenges that arise within this process. Aging Life Care is not just a business – it is shaping the lives of people for generations to come!

Byron Cordes, LCSW, C-ASWCM, CMC

Sage Care Management | San Antonio, TX

Jennifer Pagano, MA, CMC

Human Network Systems, Inc. | Denver, CO

9:00 AM – 3:00 PM

ALCA Board of Directors Meeting

1:00 PM – 5:00 PM

Aging Life Care™ Essentials: Section Two – Sales & Marketing

Pre-Conference Intensive

Separate Fee & Registration Required

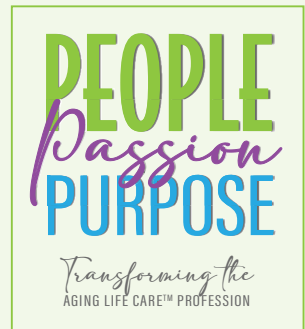
How do you position your business as the service of choice? How do you leverage your expertise to underscore your value proposition? How do you better understand your ever-changing targeted market? While you have the training, experience, education, and knowledge to provide high-level, quality professional service, how do you ensure that a steady stream of clients will come in your door? All these questions and more will be answered in this interactive four-hour pre-conference intensive. This session will further expand your abilities to reach out to other professionals who can refer business, creating a win-win situation for both parties. Enhancing your outreach skills will result in more satisfaction as well as more clients.

Byron Cordes, LCSW, C-ASWCM, CMC

Sage Care Management | San Antonio, TX

Jennifer Pagano, MA, CMC

Human Network Systems, Inc. | Denver, CO



ATTENTION EXHIBITORS

Exhibiting at the 2024 ALCA Conference will put you in direct contact with more than 350 Aging Life Care Professionals® who recommend or purchase the products and services you provide. Up to two exhibit staff can register for the conference at a 50% discount. For more information on exhibiting at the ALCA Conference, contact Bonnie Leko-Shapiro at blekoshapiro@aginglifecare.org. An Exhibitor Prospectus is available online at aginglifecare.org.

RESERVE NOW. SPACE IS LIMITED AND EXPECTED TO SELL OUT FAST!

WEDNESDAY, APRIL 17, 2024

CONFERENCE BEGINS

5:00 PM – 5:45 PM

First-Time Attendee Meet and Greet

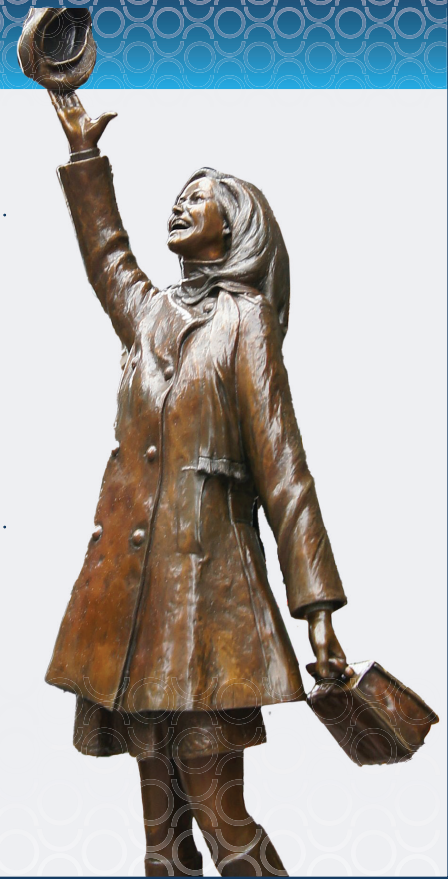
(For first-time national conference attendees only)

Attending your first conference can be overwhelming. If this is your first time attending ALCA's National Conference, please join us for a special opportunity to meet the ALCA Board of Directors and Chapter Presidents. We look forward to getting to know you!

6:00 PM – 7:30 PM

Opening Welcome Reception

The ALCA Board of Directors, Conference Planning Committee, and Staff invite you to kick off the conference at the Opening Welcome Reception at the historic Dayton's Building on the newly renovated Winter Lounge and Summer Terrace! All conference registrants, sponsors, and exhibitors are welcome to join us to catch up with old friends and meet new ones! And don't forget to stop by and get your picture at the Mary Tyler Moore statue!



CONTINUING EDUCATION (CE) INFORMATION

ALCA will apply for 15.5 continuing education contact hours for the conference (including the pre-session) for the following:

- National Academy of Certified Care Managers (NACCM) – Care Manager Certified (CMC)
- Social Work – National Association of Social Work and NY State Education Department
- Nursing – California Board of Registered Nursing
- Commission for Case Manager – Certified Case Manager (CCM)

Please indicate on your registration form which CE certificate(s) you require. You must include your license number for social work or nursing. Each certificate requested will be included in your registration packet upon check-in. Additional or replacement certificates will be available following the conference at a cost of \$25 each. You must sign the on-site attendance book daily.

Aging Life Care Association® SW CPE is recognized by the New York State Education Department's State Board for Social Work as an approved provider of continuing education for licensed social workers, #0166. This program will be approved for a maximum of 15.5 contact hours.

Provider approved by the California Board of Registered Nursing. Provider #15884 for 15.5 Contact Hours.

7:30 AM – 8:30 AM

Continental Breakfast | Visit with Exhibitors

8:45 AM – 10:15 AM

Opening Keynote Address sponsored by



formerly Home Care Assistance

ALZHEIMER’S DISEASE UPDATE: TESTING, TREATMENT & TEAMWORK

We’re delighted to have applied gerontologist Dr. Gaugler open the 2024 conference! His research examines the sources and effectiveness of long-term care for persons with Alzheimer’s disease and other chronic conditions. Underpinning these substantive areas, Dr. Gaugler will share the most recent findings on diagnostic testing and other work-ups to establish a diagnosis; current and emerging treatments and other innovations; common behavioral issues associated with Alzheimer’s disease and treatments; in addition to collaborative/multidisciplinary models of care, including the Centers for Medicare & Medicaid Services’ (CMS) new voluntary nationwide model – the Guiding an Improved Dementia Experience (GUIDE) Model.



Dr. Joseph E. Gaugler, PhD
Division of Health Policy and Management
School of Public Health, University of
Minnesota | Minneapolis, MN

10:15 AM – 11:00 AM

Morning Break | Visit with Exhibitors sponsored by



11:00 AM – 12:15 PM

General Session

FOOD AS MEDICINE

What do we really mean when we say “food-as-medicine”? We all know that food and nutrition play an important role in sustaining health and preventing disease, but in this presentation,

Anna, will go beyond general nutrition advice and delve into the key pillars of biochemistry that promote resilience and improve disorders commonly associated with aging. Anna will help us better understand the risk of nutrient deficiencies amongst various populations in the US and how Aging Life Care Professionals can help clients (and themselves) address these deficiencies to improve quality of life as we age.



Anna K Byrnes, MS, RDN, LDN
Sanare Today

12:15 PM – 1:15 PM

Networking Lunch | Visit with Exhibitors

1:15 PM – 2:30 PM

General Session

THE MENTAL HEALTH CONTINUUM IN OLDER ADULTS

During this session Dr. John Brose will help Aging Life Care Professionals better understand behavioral health care and equip us with the tools and knowledge necessary to support older adults with mental health issues. In addition to providing an overview of the continuum of mental health issues most frequently found in older adults in long term care centers, assisted living and adult day programs, he will describe how common mental health issues may show up in the behaviors of older adults so we can more clearly understand what is behind them. Essential strategies to address challenging behaviors when they arise, which may require new approaches or a significant change in philosophy, will be discussed and what you can do to adopt an effective behavioral health program.



John Brose, PhD, LP, LMFT, LADC
CEO, Owner, Clinical Director, Associated
Clinic of Psychology | Minneapolis, MN

2:30 PM – 3:00 PM

Afternoon Break | Visit with Exhibitors

THURSDAY, APRIL 18, 2024

3:00 PM – 4:00 PM

ALCA Annual Business Meeting & Awards Presentation sponsored by



4:00 PM – 4:30 PM

Afternoon Break | Visit with Exhibitors

4:30 PM – 5:30 PM

General Session

WELCOMING LGBTQI2+ HUMANS

Persons who are lesbian, gay, bisexual, and transgender have become far more visible, which reflects greater societal acceptance. Still, many people have questions about what each of LGBTQi2+ letters represent 1 and even more, want to know how to be welcoming to folks who identify along the spectrum of sexual and gender identities. What does it mean to be a LGBTQi2+ and how can straight and cisgender (nontransgender) allies be welcoming

and supportive? Further, what challenges do gay, lesbian, bisexual and transgender people continue to face in the 2020s? Aging Life Care Professionals will learn first-hand from Ellie's personal story chronicled in her memoir, *Getting to Ellen: A Memoir about Love, Honesty and Gender Change* (Stepladder Press 2013) what it means to be a member of "the Alphabet" and get advice on how to be inclusive toward this group of humans.



Ellie Krug, Writer, Lawyer, Human
| Minneapolis, MN

5:30 PM – 6:30 PM

ALCA Chapter Meetings

7:00 PM – 9:00 PM

Dine-Arounds

Experience the local cuisine and network with other conference attendees. Self-pay. Sign-ups will be available on-site.

FRIDAY, APRIL 19, 2024

7:30 AM – 8:30 AM

Continental Breakfast | Visit with Exhibitors

8:30 AM – 9:30 AM

Concurrent Breakout Sessions

AGING WITH ADULT DISABLED CHILDREN

Aging can be challenging enough, but aging with an adult child with a disability can be daunting. This presentation will focus on aging parents as the primary caregiver for their adult disabled child, the reasons behind their resistance to support, and what Aging Life Care Managers can do to assist in positive outcomes for both the aging parent and the aging adult with a disability.

Jennifer Gazda, DSW, LCSW, CMC, CDP,
Arosa | Skokie IL

UNDERSTANDING LEWY BODY DEMENTIA: KNOW THE SYMPTOMS, BE AN ADVOCATE, AND FIND SUPPORT

Lewy Body Dementia is the second most common form of progressive dementia, but it often gets misdiagnosed and misunderstood, even by health care professionals. This session will provide an overview of the basic signs, symptoms, and management strategies for people living with Lewy Body Dementia and outline the skills, resources, and support that Aging Life Care Professionals can use in their practice.

Julia Wood, MOT, OTR/L & Brandi Hackett, LMSW, C-ASWCM, Lewy Body Dementia Association (LBDA) | Lilburn, GA

continued on next page

8:30 AM – 9:30 AM

Concurrent Breakout Sessions *continued*

COMMUNICATION MATTERS... AND LOWERS STRESS

Make your life easier, come and enjoy this interactive presentation and discover how these two leadership tools - Communication and Game Changing Conversations - will change the way you interact with staff, clients, referral partners and families. Your role as an Aging Life Care Professional is tough enough – attending this presentation is guaranteed to reduce stress and provide you with four Communication Styles and a 7-step Game Changing Conversation Matrix.

Chris Williams, CEO

Wide Awake Business, LLC | Minden, NV

9:30 AM – 10:15 AM

**Morning Coffee Break |
Final Visit with Exhibitors**

10:15 AM – 11:15 AM

Concurrent Breakout Sessions

THE NEW AGE OF AGING

Aging has undergone a significant transformation over the past two decades, and it now presents a different set of challenges and opportunities than it did in the past. With longer life expectancies and changing societal dynamics, it is crucial for Aging Life Care Managers to adapt their approaches to meet the evolving needs of today's modern elders. This workshop seeks to empower attendees with the knowledge and skills to promote healthy longevity, well-being, and aging positivity, so they can support their clients in growing, participating, and engaging fully in life.

**April Ibarra, MGS, Flourish For Life |
Bellevue, KY**

THE SILENT EPIDEMIC: IDENTIFYING AND ADDRESSING LONELINESS IN OUR AGING CLIENTS

Explore the profound impact of loneliness in aging populations and delve into its underlying

causes, physiological effects, and the tools for its identification. Learn innovative interventions and the pivotal role of Aging Life Care Professionals in addressing this multifaceted issue, illustrated with a compelling case study.

Shadi Gholizadeh, PhD, MPH, MSc, CMC
The Key | Trabuco Canyon, CA

CONSIDERATIONS AND BEST PRACTICES WITH TECHNOLOGY AND DIGITAL TOOLS FOR AGING LIFE CARE MANAGERS®

Technology is a growing part of an Aging Life Care manager's role with new systems, software, digital tools, and apps to engage with the client, organize services, and monitor activity. Using digital systems to care for clients brings a wealth of opportunity but can also create potential risks. The panelists will discuss best practice through a review of professional standards and industry trends for safe-guarding client information and the Aging Life Care management practice. There will be a discussion of important topics regarding data security, emergency preparedness, selection of software and digital tools, and ongoing management of technology.

Jennifer Crowley, RN, BSN, CLCP, CADDCT, CDP, CMC, Eagleview West/The Life Care Management Institute

Shawn Fell, CMIT Solutions

Dan Fredericks, IHealthHome

Shanna Huber, RN, MSN, CCM, CLCP, CNCLP, CMC, MyJunna

Ben Klocek, ElderPagesOnline

11:15 AM – 11:30 AM

Break

11:30 AM – 12:30 PM

Concurrent Breakout Sessions

HOARDING DISORDER: A COLLABORATIVE HARM REDUCTION APPROACH FOR AGING LIFE CARE PROFESSIONALS®

Most people can identify hoarding situations, but few know how to attempt to intervene. This

presentation is designed for direct services by Aging Life Care Professionals to learn how to utilize knowledgeable and respectful engagement skills, work with clients to develop measurable and goal directed harm reduction plans of care, initiate advocacy services for reasonable accommodation recognition, along with identifying and enlisting other community agencies and stakeholders, to build a community-based support and intervention system.

Anne B. Pagano, LCSW, ACSW, C-ASWCM, BCD
Pagano Senior Care, LLC | White Plains, NY

AGING LIFE MEDIATION: AN AGING LIFE CARE MANAGER® DRIVEN MEDIATION MODEL TO RESOLVE FAMILY CONFLICTS WITH AGING ADULTS

Initiating client care is often blocked due to conflicts between family members. Join us to discuss the common issues and a unique model that combines the mediation model with the values and skills of an Aging Life Care Manager.

Bunni Dybnis, MA, LMFT, CMC
Aging Life Matters | Los Angeles, CA

WHAT EVERY AGING LIFE CARE PROFESSIONAL® NEEDS TO KNOW ABOUT ELDER LAW

Myriad professions touch aging clients - gerontologists, social workers, Aging Life Care Managers, case managers, healthcare providers, caregivers, etc., etc. - but one of the sometimes-forgotten members of the aging client care team is the elder law attorney. Many believe legal services are expensive and unnecessary, but Elder Law Attorneys - whether through private service, legal services, or other means - who see the whole person and have experience in a vast array of legal matters, from medical benefit applications to financial planning to guardianship and its alternatives, are crucial in preserving the autonomy and independence of every aging person. Learn about leading issues in Elder Law, resources to access Elder Law, and what everyone working with an aging client

should know about Elder Law and the attorneys who practice it.

Jill Sauber, JD, CELA, Sauber Legal Services | Minneapolis, MN

12:30 PM – 1:30 PM

Networking Luncheon / MRG Meet Ups

1:30 PM – 2:30 PM

Concurrent Breakout Sessions

ANSWERING THE CALL: THE SOLO AGING MOVEMENT

Aging Life Care Professionals are generally the best suited to support solo agers. Without typical family support, solo agers find themselves aging without a safety net. This presentation offers a methodology for Aging Life Care Managers.

Beverly Bernstein Joie, MS, CMC, Solo Wise | Newtown Square, PA

CONTROLLING THE CHAOS BY IMPLEMENTING TECH-ENABLED AGING LIFE CARE MANAGEMENT®

Does this sound familiar? Your client: Can't get the care they need? Forgets to take medications? Feels isolated and lonely? Struggles getting to appointments? Is at risk for falls or other emergencies? Nothing can replace the human touch, however adding technology can help your clients, families, and you stay connected to ensure safety and empower independence.

Diane Gotebiowski, PT, DPT, VivaLynx/EverHome Care Advisors/EverHome Columbia Inc. | Latham, NY

**SAVE \$200 WITH
EARLY BIRD DISCOUNT**

Register BY MARCH 15, 2024

FRIDAY, APRIL 19, 2024

1:30 PM – 5:00 PM

Mid-Conference Intensive Workshop

Separate Fee & Registration Required

Not eligible for CEUs

SUCCESSION PLANNING AND PREPARATION FOR AGING LIFE CARE PROFESSIONALS®

As a holistic-generalist business consultant with over 25 years of coaching experience, Bryan Herde has served nearly 100 different varieties of businesses and nonprofits. His core expertise lies in working with small business owners by preparing them for start-up; addressing challenges inside or outside their business as they grow; and determining and implementing effective exit strategies. During this workshop,

Bryan will help you determine the best possible options for succession, help you assess your current readiness for succession, establish succession goals and strategies, prepare the company and targeted persons for transition and sustainability, discuss strategic timelines and set ownership and management priorities and accountability. Over the course of this free-flowing, interactive and emotional three-hour workshop, participants will address each Aging Life Care Professional's motivation, hopes, dreams, fears, realities, negotiables (and non-negotiables), timelines and deadlines, options, valuation, planning and preparation, transition and implementation, and ultimately...letting go.

Bryan L. Herde, President, Integrity Services Global | Aurora, CO

ROUNDTABLES

3:00 PM – 5:00 PM

Mid-Conference Roundtables

Free / No Registration is Required

Not Eligible for CEUs

ADVANCED PROFESSIONAL ROUNDTABLE

Join experienced colleagues for discussions on topics important to you and your practice. Dig deep into issues that affect all Advanced Professional Aging Life Care members. Members in the room decide on the topics and the discussions will be facilitated by ALCA leadership. This is a free member benefit for Advanced Professional Members only. Here's what past participants said... "Loved everyone's honesty about their practices"... "Well run – great topics, great networking"... "One of my favorite sessions."

XTREME MENTORING ROUNDTABLE

Got a question? Got a dilemma? Is it business, clinical, or ethical? We'll cover them all in Xtreme Mentoring. We'll take your topics. Make a list. Choose your subject matter. And then we begin! You'll get connected with a panel of experts – some of ALCA's most experienced Aging Life Care Professionals and leaders in the field. You set the agenda and the pace! Here's what past program participants had to say... "The people were wonderful!"... "So open to sharing ideas and what works and what didn't"... "a valuable part of the conference."

SAVE \$200 WITH EARLY BIRD DISCOUNT

Register BY MARCH 15, 2024

7:30 AM – 8:30 AM

Breakfast | General Session

AN EXAMINATION OF THE AGING LIFE CARE ASSOCIATION®

Join us for an update on the ALCA Research Study project, including preliminary results from the nationwide survey.

Pamela B. Teaster, PhD, MA, MS, NREMT,
Professor and Director, Center for Gerontology
Virginia Tech | Blacksburg, VA

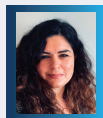
Carlisle Shealy, PhD, MPH, Assistant Director,
Center for Gerontology Virginia Tech |
Blacksburg, VA

8:30 AM – 9:45 AM

General Session

**FRONTOTEMPORAL DEGENERATION:
SUPPORTING THE PERSON DIAGNOSED
AND THE FAMILY**

Frontotemporal degeneration (FTD) refers to a group of progressive neurological diseases affecting the brain's frontal and temporal lobes. FTD disorders are characterized by gradual deterioration in behavior, personality, language, and/or movement, with memory usually relatively preserved. This session will review FTD and its subtypes, the road to diagnosis, symptoms and behaviors that are common in FTD. We will also highlight a family's lived experiences of an FTD diagnosis and effective strategies to minimize their effect on persons diagnosed and their families.



Esther Kane, MSN, RN-CDP, Director of
Support and Education Association of
Frontotemporal degeneration (AFTD) |
King of Prussia, PA

9:45 AM – 10:00 AM

Coffee Break

10:00 AM – 11:00 AM

General Session

**BEFRIENDING DEATH LEADS TO A BETTER
DEATH AND A BETTER LIFE**

Providing services to patients and families at the end of life is a growing industry. "Doula Jane," a trained end-of-life Doula and CNA, will share the practical guidance and support death doulas provide for individuals and families during the end-of-life process. Participants will be able to create a daily practice to befriend death and better understand the concept of a natural death. Learn how to find, work with, or incorporate death doula services into your practice to better prepare your clients during their end-of-life journey.



Jane Whitlock, aka Doula Jane |
Minneapolis, MN

11:00 AM – 11:15 AM

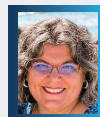
Break

11:15 AM – 12:30 PM

Closing General Session

**PREVENTING DECISION FATIGUE WITH A
RESILIENT HABIT OF MIND**

You won't want to miss the special session designed to spark professional and personal insight and growth! Dr. Saez will share with us how Aging Life Care Professionals can enhance energy management for more resilient caregiving – of our clients, our employees, and also ourselves. Learn more about the importance of brain-based wellness and how to incorporate energy tracking strategies into your daily practice.



Leilani Sáez, PhD | ACC
Natural Capacities Certified Life Coach
Specializing in Mindful Neuroplasticity |
Eugene, OR

END OF CONFERENCE

40th ANNIVERSARY Celebration **PEOPLE** *Passion* **PURPOSE**
TRANSFORMING THE AGING LIFE CARE™ PROFESSION

FRIDAY, APRIL 19, 2024 - OPTIONAL EVENT

THE PAISLEY EXPERIENCE TOUR

3:00 – 6:00 PM

Separate Fee & Registration Required

\$125 Per Person

Limited non-refundable tickets available

Please check schedule of events before booking

PACK YOUR PURPLE!

As a Minneapolis native, Prince lived in various places around the city, frequented and performed at music venues, and shopped at a one-of-a-kind music store. Minneapolis helped shape Prince into the man and the artist he became, and in return, Prince forever left his mark on the city. Even as Prince's success swept the globe, he always remained close to his roots.



You can celebrate Prince's memory in the best way possible – a tour of Paisley Park – his extraordinary estate and production complex in Chanhassen, MN, 20 minutes southwest of Minneapolis.

Fans, music lovers, and curious individuals will have the unique opportunity to experience what it was like for Prince to create, produce, and perform inside this private sanctuary and remarkable production complex.

Throughout the 90-minute Paisley Experience guided tour, you will see artifacts from Prince's personal archives, including iconic concert wardrobe, awards, musical instruments, artwork, motorcycles, rare music, and video recordings. Ticket price includes round-trip transportation from the hotel to Paisley Park and guided tour.



ALCA Office Use Only:
 Date Rec'd _____
 Payment Rec'd _____



REGISTRATION FORM | Please type or print clearly. One form per person.

Name _____ Nickname (for Badge) _____

Company/Agency _____

Address _____

City _____ State _____ Zip _____

Telephone _____ Cell Phone _____

E-mail _____

Emergency Contact Name _____ Phone _____ Relationship to You _____

- Please update my contact information for the ALCA database as listed above.
- I have a disability/special need that may require special accommodations in order for me to participate fully. Please contact me.

First Time National Conference Attendee Yes No **If yes, would you like to participate in our Conference Buddy Program?** Yes No

Conference Registration includes the Opening Reception, General Sessions, Breakouts, and regular meal functions.

Separate registration and fees will apply to Pre-Sessions and Mid-Conference Intensives. You may choose which breakout sessions to attend on site; you do not need to sign up for breakout sessions in advance.

Continuing Education Certificates

All CE certificates are included in your registration fee when pre-ordered and will be distributed in your registration packet. Additional and/or replacement certificates will be available at a cost of \$25 each.

I need (Please check all that apply and provide your license number where indicated):

- NACCM Care Manager Certified (CMC) Certified Case Manager (CCM)
- NASW Social Work/License # _____ NYSED Social Work/License # _____
- Nursing/License # _____

Please register online at aginglifecare.org or complete the Registration Form and return with a check payable to ALCA or charge below to:

VISA/MC/AMEX # _____ Exp. _____

Card Holder's Name _____ Signature _____
 (please print)

MAIL TO: ALCA-2024 Conference Registration | 3275 W. Ina Road, Suite 130 | Tucson, AZ 85741 | 520.881.8008 | 520.325.7925 FAX

REFUND POLICY: No refunds will be issued after March 1, 2024. Cancellations before that date will receive a refund minus a \$50 administration fee. Substitutions are welcome.

Registration Form (continued)

Name Here _____

Conference Registration Fees

	On or Before Mar 15, 2024	After Mar 15, 2024	After April 1, 2024 OR On-site	
ALCA Member/Partner Registration.....	\$599.....	\$699.....	\$799.....	= \$ _____
Non-Member Registration.....	\$799.....	\$899.....	\$999.....	= \$ _____
ALCA Student Member Registration* \$150.....	Student Non-Member Registration* \$200.....			= \$ _____

* Student registration is not available online. Please fill out form and submit by mail or fax.

One-Day Registration Fees

MEMBER/PARTNER	Thursday.....	\$355 – includes continental breakfast and lunch.....	= \$ _____
	Friday.....	\$355 – includes continental breakfast and lunch.....	= \$ _____
	Saturday.....	\$315 – includes continental breakfast.....	= \$ _____
NON-MEMBER	Thursday.....	\$405 – includes continental breakfast and lunch.....	= \$ _____
	Friday.....	\$405 – includes continental breakfast and lunch.....	= \$ _____
	Saturday.....	\$365 – includes continental breakfast.....	= \$ _____

Special Dietary Needs (Special meals are available for lunch only.)

Vegetarian Gluten-free

Kosher – \$25 additional fee per meal will apply.

Please indicate day(s) Kosher lunch required: Thursday Friday..... @ \$25..... = \$ _____

Pre-Sessions / Mid-Conference Intensives

These sessions require separate registrations.

	On or Before Mar 15, 2024	After Mar 15, 2024	After April 1, 2024 or On-site	
Aging Life Care Essentials (Sections 1&2) Wednesday, April 17 • 8:00am – 12:00pm & 1:00pm – 5:00pm	\$260.....	\$325.....	\$395.....	@ \$ _____ = \$ _____
Section 1 only Wednesday, April 17 • 8:00am – 12:00pm	\$155.....	\$225.....	\$295.....	@ \$ _____ = \$ _____
Section 2 only Wednesday, April 17 • 1:00pm – 5:00pm	\$155.....	\$225.....	\$295.....	@ \$ _____ = \$ _____
Mid-Conference Intensive – Succession Planning (ALCA Members Only) Friday, April 19 • 1:30pm – 5:00pm	\$175.....	\$250.....	\$325.....	@ \$ _____ = \$ _____

Optional Event - The Paisley Experience
Friday, April 19 • 3:00pm – 6:00pm @ \$125 = \$ _____

Guest Meal Tickets (For Non-Conference Attendees)

_____ Wednesday PM Reception.....	\$75.....	= \$ _____
_____ Thursday AM Continental Breakfast.....	\$30.....	= \$ _____
_____ Thursday PM Lunch.....	\$75.....	= \$ _____
_____ Friday AM Continental Breakfast.....	\$30.....	= \$ _____
_____ Friday PM Lunch.....	\$75.....	= \$ _____
_____ Friday Optional Event.....	\$125.....	= \$ _____
_____ Saturday AM Continental Breakfast.....	\$30.....	= \$ _____

TOTAL = \$ _____